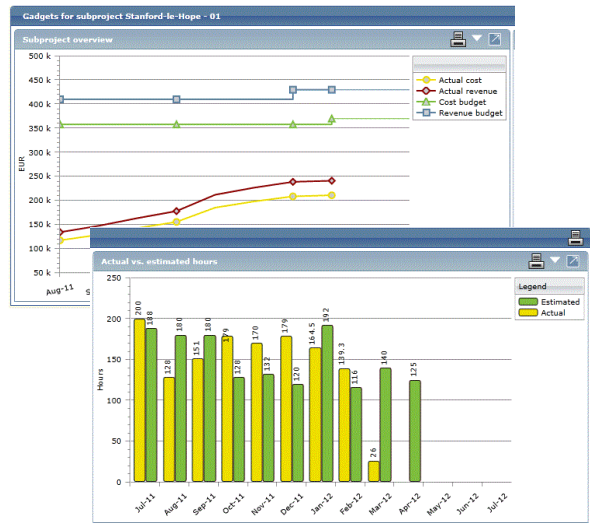
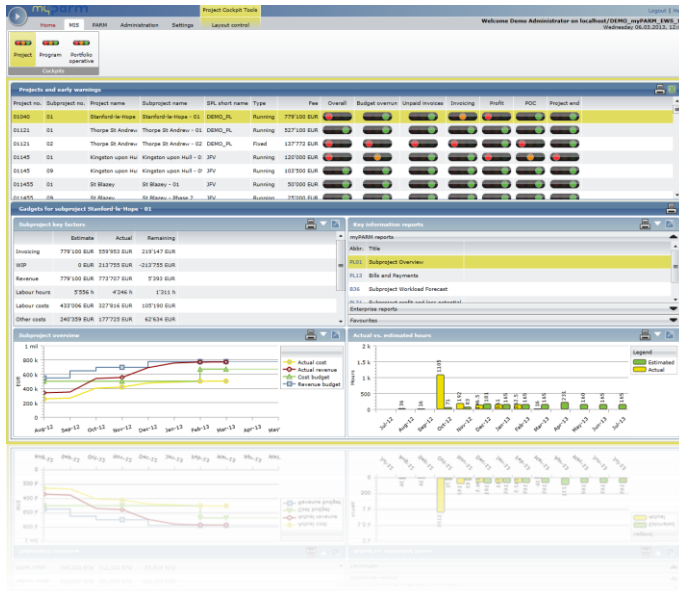


Early Warning System myP&P ARM

The early warning system as contribution to company success!



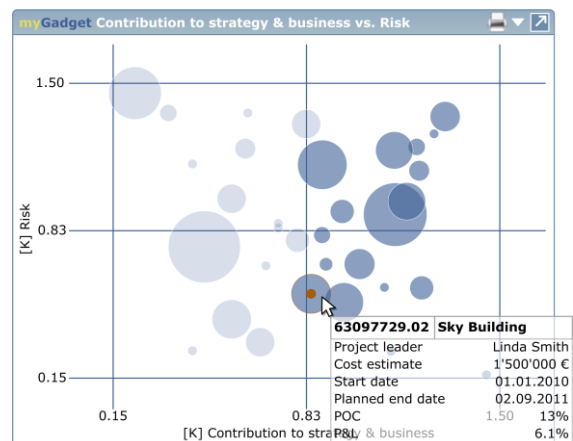
The early warning system monitors your most important project data (KPI – key performance indicators) independently and alerts the relevant personnel when the performance index reaches a critical threshold.

The user (team member, project manager, department manager, controller, administrator) automatically receives a notification, which leads him to the key performance index and indicates the actions required.

The early warning system has recourse to data from your internal company databases (myP&P Enterprise Warehouse).

Topics

Early warning indicators (key performance indicators), early recognition of critical situations, automatic notification, workflow management, increasing of the data quality



Product versions and applications

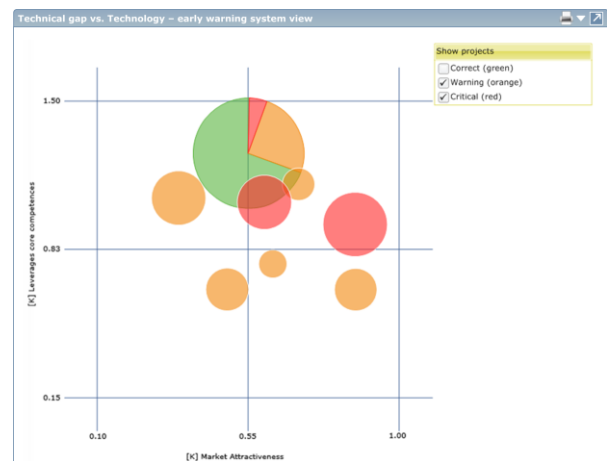
The introduction of key performance indicators allows you to track and secure your strategic objectives – the system saves you the time for expensive tracking of critical project data.

The early warning system calculates your company-specific KPIs (key performance indicators) continuously in the background. As soon as a data value is beyond the agreed tolerance, the traffic light logic shows you its condition immediately. If the error is not removed within the agreed time, an escalation mechanism makes sure that the next higher level of management is notified via e-mail or SMS (workflow management in the event of non-observance of a notification escalation).

The early warning system is designed as modern dashboard and allows you to only view the «gadgets» which are specifically important for you.

The dashboard shows you not only tabular and graphical management information. By means of drill down functionalities via mouse click you are able to penetrate directly to the origin of the problem or its correction.

Each user role has different requirements on controlling: The project leader must have his project under control, the manager must be able to monitor his portfolio.



Further advantages

- Increase in your data quality (precision and topicality) – you profit from controlled and improved data
- Acceptance of the system as auxiliary rises (system «cooperates and thinks») – the user is encouraged to identify with the system
- Recognising and solving potential problems within the project at the source of error in a very early stage will result in the benefit of gaining time and saving follow-up costs
- Dependence on the people factor (availability and know-how) is reduced – management bases its decisions on uniform and proven data

More information

Contact us! We look forward to a personal dialogue with you, so that you can obtain a clear picture of our application. We will be happy to take time to answer your questions. Please call +41 71 243 10 00

